

YEAR

2023

LINK KAM SHEUNG RD (from KAM TIN RD to KAM TIN RD)

COVERAGE (B) STATION

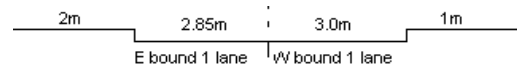
6208

ROAD NETWORK

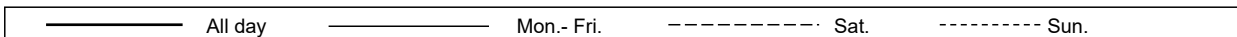
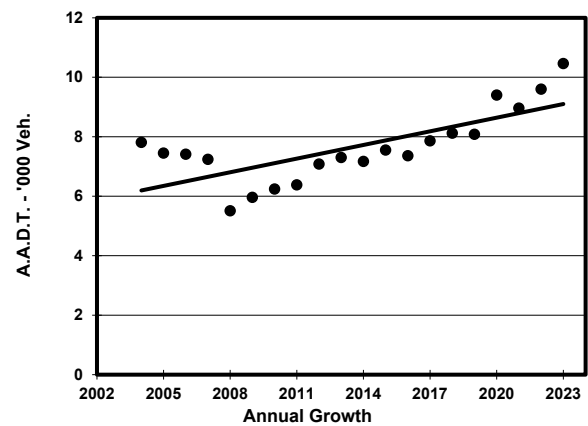
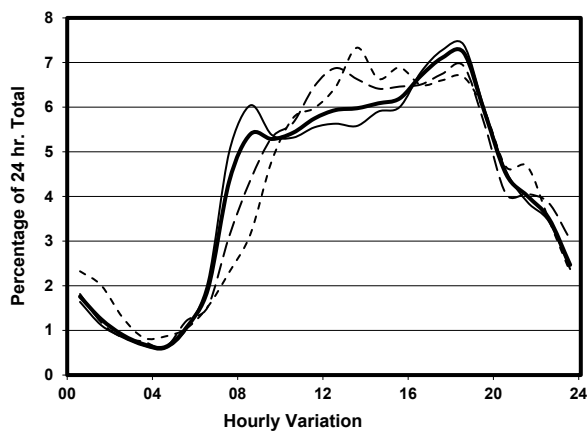
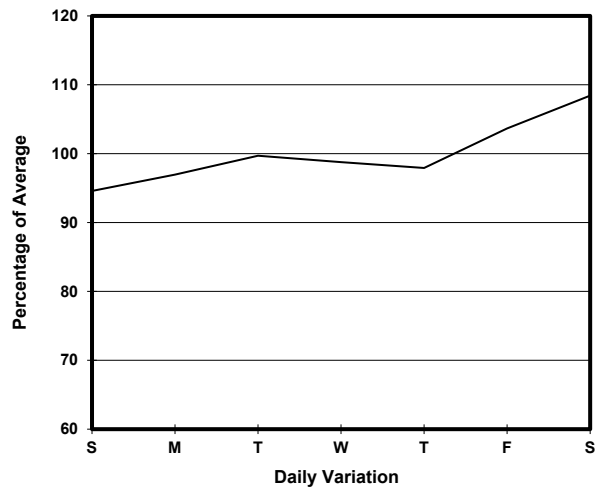
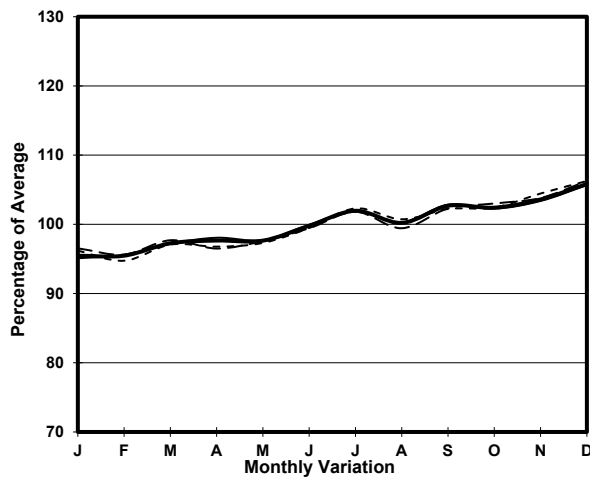
MAJOR

ROAD TYPE

RURAL ROAD



## 1. TRAFFIC FLOW VARIATION AND GROWTH



## 2. TRAFFIC CHARACTERISTICS (BY DIRECTION)

Parameter	All - Day	Mon. - Fri.	Sat.	Sun.
<b>EAST BOUND</b>				
A.A.D.T.	5320	5280	5790	5130
R 12 / 24 - %	69.5	70.3	69.5	65.9
R 16 / 24 - %	89	89.4	88.5	87.1
AM Peak Hour	0900-1000	0900-1000	0900-1000	0900-1000
One-way flow at AM peak hour	290	300	280	230
T - % (AM)	-	7.2	-	-
PM Peak Hour	1700-1800	1800-1900	1700-1800	1800-1900
One-way flow at PM peak hour	370	380	400	330
T - % (PM)	-	7.2	-	-
Prop.of commercial vehicles - 16 hr.	-	5.5	-	-

<b>WEST BOUND</b>				
A.A.D.T.	5140	5130	5570	4850
R 12 / 24 - %	73.4	73.5	73.6	72.5
R 16 / 24 - %	89.7	89.9	89.5	88.6
AM Peak Hour	0800-0900	0800-0900	0900-1000	0900-1000
One-way flow at AM peak hour	300	340	320	250
T - % (AM)	-	10.3	-	-
PM Peak Hour	1800-1900	1800-1900	1800-1900	1700-1800
One-way flow at PM peak hour	390	390	420	340
T - % (PM)	-	1.8	-	-
Prop.of commercial vehicles - 16 hr.	-	5.4	-	-

## 3. OTHER INFORMATION AND COMMENT

**4. Vehicle classification and occupancy - Monday to Friday**

Time		Class of vehicle									
		Motor Cycle	Private Car	Taxi	Private LB	PLB	Goods veh.		Non Fr. Bus	Fr. Bus	
							Light	M & H		SD	DD
0700-0800	Pro	3.7	47.7	7.3	1.8	10.1	16.5	4.6	5.5	0.0	2.8
	Ocp	1.3	1.3	2.0	13.0	8.2	1.9	1.0	15.0	0.0	17.5
0800-0900	Pro	2.1	51.0	4.9	5.6	7.7	19.5	4.9	2.1	0.0	2.3
	Ocp	1.0	1.3	1.7	4.4	7.8	1.6	1.0	17.0	0.0	13.6
0900-1000	Pro	0.8	51.4	9.8	0.0	8.3	22.7	3.8	0.0	0.0	3.2
	Ocp	1.0	1.5	1.8	0.0	8.1	1.6	1.2	0.0	0.0	13.4
1000-1100	Pro	0.9	54.4	9.7	0.9	7.9	20.2	3.5	0.0	0.0	2.6
	Ocp	1.0	1.4	1.6	2.0	9.7	1.5	1.3	0.0	0.0	18.0
1100-1200	Pro	2.5	56.3	8.4	0.0	7.6	19.3	3.4	0.0	0.0	2.5
	Ocp	1.0	1.3	2.3	0.0	13.9	1.7	1.8	0.0	0.0	28.8
1200-1300	Pro	1.4	55.6	7.2	2.9	8.7	18.1	4.3	0.0	0.0	1.8
	Ocp	1.0	1.5	1.7	4.8	10.1	1.4	1.2	0.0	0.0	29.7
1300-1400	Pro	1.8	51.3	5.9	0.0	6.5	31.3	1.2	0.0	0.0	2.1
	Ocp	1.0	1.5	2.0	0.0	8.5	1.7	1.0	0.0	0.0	24.3
1400-1500	Pro	4.6	55.5	7.6	0.8	6.8	18.3	3.8	0.0	0.0	2.7
	Ocp	1.0	1.5	1.6	1.0	8.8	1.3	1.4	0.0	0.0	23.4
1500-1600	Pro	1.9	63.6	8.2	1.9	5.7	13.9	3.2	0.0	0.0	1.7
	Ocp	1.0	1.4	2.1	7.7	10.0	1.6	1.2	0.0	0.0	31.1
1600-1700	Pro	0.6	59.9	9.8	4.6	5.8	15.6	1.7	0.6	0.0	1.4
	Ocp	1.0	1.5	1.6	2.3	12.2	1.6	1.0	17.0	0.0	37.0
1700-1800	Pro	5.2	61.9	9.8	0.0	7.5	11.0	2.3	0.0	0.0	2.2
	Ocp	1.0	1.5	2.0	0.0	10.8	1.3	1.3	0.0	0.0	35.9
1800-1900 Peak hour	Pro	4.5	75.7	4.5	0.0	5.0	6.1	1.1	1.1	0.0	2.1
	Ocp	1.0	1.4	1.8	0.0	12.8	1.5	1.0	16.0	0.0	25.2
1900-2000	Pro	2.5	70.8	9.4	0.0	3.8	10.7	0.0	0.6	0.0	2.2
	Ocp	1.0	1.5	2.3	0.0	12.0	1.5	0.0	22.0	0.0	18.5
2000-2100	Pro	2.4	71.5	13.0	0.0	3.3	6.5	0.8	0.0	0.0	2.4
	Ocp	1.0	1.4	2.0	0.0	6.3	1.3	1.0	0.0	0.0	14.8
2100-2200	Pro	3.7	61.7	11.1	0.0	4.9	12.3	2.5	0.0	0.0	3.7
	Ocp	1.0	1.5	1.6	0.0	7.0	1.2	1.0	0.0	0.0	16.3
2200-2300	Pro	2.5	68.4	20.3	0.0	2.5	3.8	0.0	0.0	0.0	2.5
	Ocp	1.0	1.3	1.9	0.0	4.0	1.7	0.0	0.0	0.0	9.9
16 hours	Pro	2.6	60.1	8.7	1.2	6.4	15.6	2.5	0.6	0.0	2.3
	Ocp	1.0	1.4	1.9	4.6	9.8	1.5	1.2	16.3	0.0	22.3

**Legend: Pro.** Proportion of vehicles in % (Sum may not add up to 100% due to figure rounding)\*

**Ocp.** Average occupancy of vehicles including both driver and passengers\*

**M&H** Medium and Heavy

\* All traffic data are collected from combined bounds